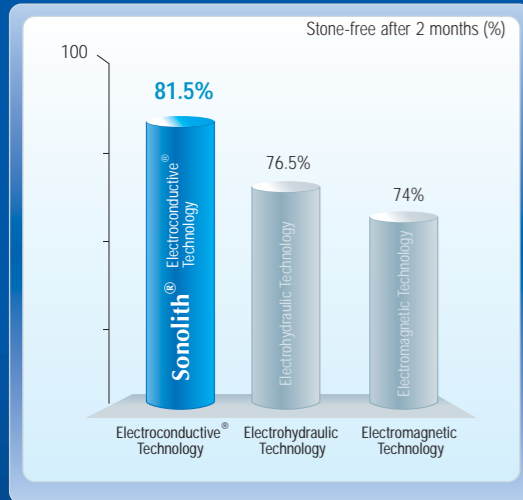




... for optimum clinical performance

Using the **Electroconductive®** technology in our lithotripters leads to:

- **Highest stone free rate after 60 days in 81.5% of patients**

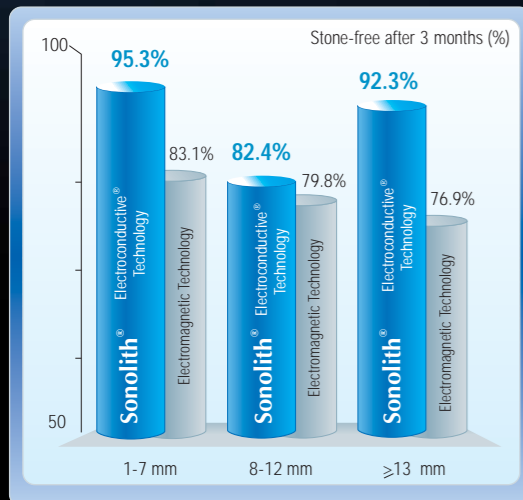


Saltutti C, Di Benedetto A, et al. Extracorporeal lithotripters: is there a new gold standard? In vivo multifunctional comparison between 6 mobile devices. Congresso Nazionale Auro, IT, Roma, Italy, 2003.

- **Low re-treatment rate: 14%**  
Electromagnetic technology: 20-30%  
Piezoelectric technology: 45-65%

Nomikos MS, Sowter SJ, Tolley DA. Outcomes using a fourth-generation lithotripter: a new benchmark for comparison? BJU international. 2007.  
Rassweiler J, Tally G, Chaussy C. Progress in lithotripter technology.EAU Update Series. 2005;3:17-36.

- **Greater efficacy whatever the stone size**



Pemberton RJ, Tolley DA. Comparison of a New-Generation Electroconductive Spark Lithotripter and the Dornier Compact Delta for Ureteral Calculi in a Quaternary Referral Center. Journal of Endourology, vol 20 (10), October 2006 (732-736).



You Master Urology

We Master Therapeutic Ultrasound

EDAP TMS is the leader in therapeutic ultrasound. Having been present in the market for more than 25 years, EDAP TMS (NASDAQ: EDAP) develops minimally-invasive therapeutic solutions for urology.

By consistently investing in research and development and by forming partnerships with internationally-renowned medical research institutions, EDAP TMS has been able to patent innovative technologies.

EDAP TMS is present in many countries via an extensive network of Subsidiaries and Distribution Partners. The Company focuses on producing a high standard of service for health care practitioners: mobile equipment, training centers and a far-reaching maintenance network.

With Ablatherm® HIFU, EDAP TMS is the world leader in High Intensity Focused Ultrasound (HIFU) for localized prostate cancer treatment.

The company is currently adapting this technology so that it is potentially able to treat other types of tumors.

As a pioneer and key player in the field of extracorporeal lithotripsy, EDAP TMS introduced the first modular lithotripter and owns the patent for Electroconductive® technology, utilized in its Sonolith® range of ESWL systems.

EDAP TMS focuses every day on delivering technologies that guarantee positive outcomes which are replicable, with low side effects and a preserved quality of life.

[www.edap-tms.com](http://www.edap-tms.com)



Bringing New Horizons to Therapy

EDAP TMS - 4, rue du Dauphiné - PA La Poudrette Lamartine - 69120 Vaulx-en-Velin - FRANCE  
Tél : +33 (0)4 72 15 31 50 - Fax : +33 (0)4 72 15 31 51 - [www.edap-tms.com](http://www.edap-tms.com) - [contact@edap-tms.com](mailto:contact@edap-tms.com)

ISO 900: 2000 • ISO 13485: 2003

TMS 394 804447 RCS ISON - TMS 509 785 B - April 2008 - All specifications subject to change without notice. Pictures not binding.

Integrated ESWL

Sonolith®  
(((i-sys



Power, accuracy  
and user-friendliness ...  
... at your fingertip



Bringing New Horizons to Therapy

## 1 Ready

Thanks to the Stone Locking System, through the simple touch of a button on the Navigation Platform, stones can be located.

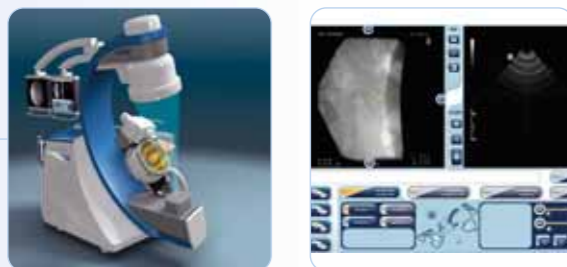


## 2 Aim

Once the stone has been located by X-ray or ultrasound, the patient table is automatically positioned, pivoting on three axes to ensure the stone is at the treatment point (F2).

Real time and simultaneous display of X-ray and ultrasound images enables you to:

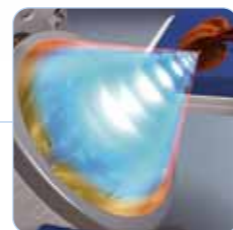
- double check the stone position
- follow stone movements in real time
- reposition the stone without interrupting treatment



- ▶ Greater accuracy
- ▶ Fast stone localization
- ▶ Increased efficacy

## 3 Fire

Choose the treatment parameters (pressure and frequency) from the Navigation Platform according to stone type, size and position. The unique features of the **Electroconductive®** technology lead to:



- ▶ Complete and fine fragmentation of stones



- Isocentric and motorized X-ray system
- Isocentric and motorized ultrasound probe holder
- Isocentric and motorized treatment head with penetration depth of 170 mm
- Automatic Pressure Regulator
- Clinical versatility: ESWL and endourology modes

### *Electroconductive®* technology

#### *Power and accuracy*

Thanks to the development of an exclusive and patented electrode encapsulated in a highly conductive solution (Electrolyte®):

- all electrical discharges are identical
- all shock waves are generated from the same geometric point (F1)
- the full power of the shock wave is transferred directly to the focal point (F2)

- ▶ Complete and fine fragmentation of stone

#### *Reliable and safe*

#### **Automatic Pressure Regulator** EXCLUSIVE

The exclusive Automatic Pressure Regulator incorporates an in-built hydrophone within the treatment head which measures and adjusts the required pressure in real time:

- ▶ Identical efficacy and fragmentation from one firing to the next
- ▶ Safe therapeutic choice

#### *Uniform efficacy on all stone types and sizes*

No stone is the same. The physical features of the **Electroconductive®** technology offer a great flexibility in the choice of therapeutic protocol:

- ▶ Extensive settings range
- ▶ Variable energy density
- ▶ Variable focal volume
- ▶ Penetration depth : 170 mm

